



Elevating Safety  
**Strengthening Structures!**



In 2019; NSG, which combines months of R&D studies with qualified team, effective sales, sensitive after-sales service principles, started the production of telescopic props used in the development of construction and structures. NSG, which is the first company to produce Italian-type props in Turkey, has become a leading manufacturer and leading exporter with its presence in the field, and it has accelerated in 2020 and continues to develop and grow as a company known for its quality in over 30 countries...



## ITALIAN TYPE ELECTRO GALVANISED PROP

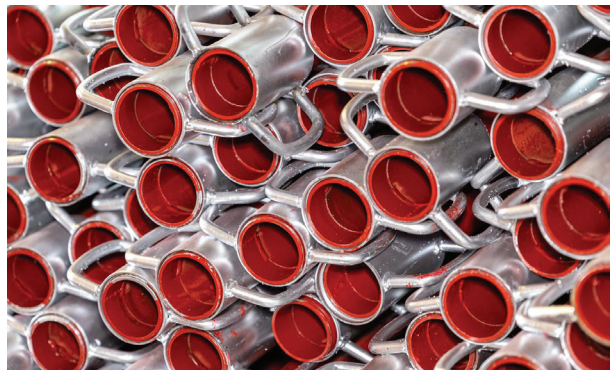
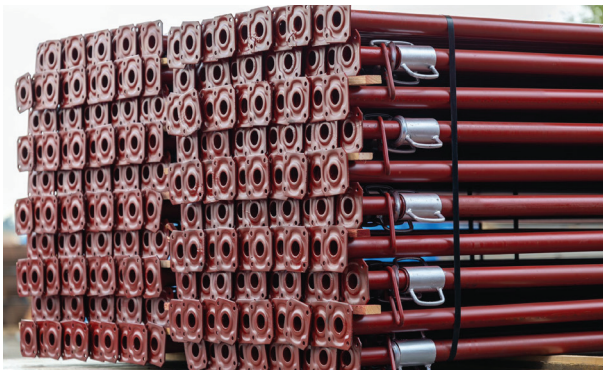
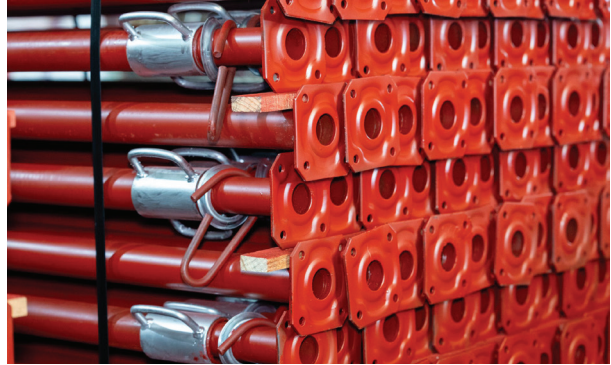


### Product Features

Min-max Usage Length	Outer Tube Diameter	Inner Tube Diameter	Prop Weight (kg)
330 cm-510 cm	56mm	48mm	13,10 kg (+-%3)
330 cm-510 cm	56mm	48mm	
230 cm-400 cm	56mm	48mm	10,40 kg (+-%3)
230 cm-400 cm	56mm	48mm	
210 cm-360 cm	56mm	48mm	9,60 kg (+-%3)
210 cm-360 cm	56mm	48mm	
190 cm-320 cm	56mm	48mm	8,80 kg (+-%3)
190 cm-320 cm	56mm	48mm	
180 cm-300 cm	56mm	48mm	8,40 kg (+-%3)
180 cm-300 cm	56mm	48mm	
180 cm-300 cm	56mm	48mm	7,55 kg (+-%3)
180 cm-300 cm	56mm	48mm	

**Elevating Safety, Strengthening Structures!**

## ITALIAN TYPE PAINTED PROPS WITH GALVANISED NUT

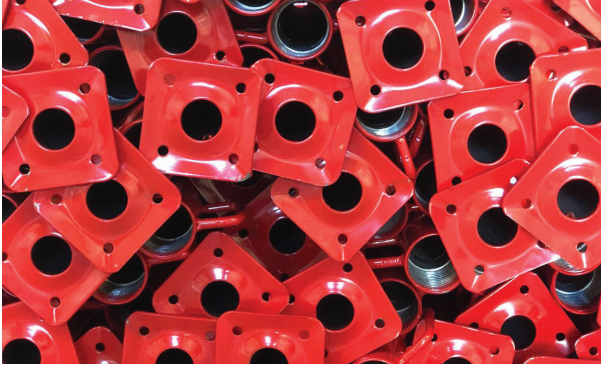


### Product Features

Min-max Usage Length	Outer Tube Diameter	Inner Tube Diameter	Prop Weight (kg)
330 cm-510 cm	56mm	48mm	13,10 kg (+-%3)
330 cm-510 cm	56mm	48mm	
230 cm-400 cm	56mm	48mm	10,40 kg (+-%3)
230 cm-400 cm	56mm	48mm	
210 cm-360 cm	56mm	48mm	9,60 kg (+-%3)
210 cm-360 cm	56mm	48mm	
190 cm-320 cm	56mm	48mm	8,80 kg (+-%3)
190 cm-320 cm	56mm	48mm	
180 cm-300 cm	56mm	48mm	8,40 kg (+-%3)
180 cm-300 cm	56mm	48mm	
180 cm-300 cm	56mm	48mm	7,55 kg (+-%3)
180 cm-300 cm	56mm	48mm	

**Elevating Safety, Strengthening Structures!**

## ITALIAN TYPE POWDER COATED PROPS



### Product Features

Min-max Usage Length	Outer Tube Diameter	Inner Tube Diameter	Prop Weight (kg)
330 cm-510 cm	56mm	48mm	13,10 kg (+-%3)
330 cm-510 cm	56mm	48mm	
230 cm-400 cm	56mm	48mm	10,40 kg (+-%3)
230 cm-400 cm	56mm	48mm	
210 cm-360 cm	56mm	48mm	9,60 kg (+-%3)
210 cm-360 cm	56mm	48mm	
190 cm-320 cm	56mm	48mm	8,80 kg (+-%3)
190 cm-320 cm	56mm	48mm	
180 cm-300 cm	56mm	48mm	8,40 kg (+-%3)
180 cm-300 cm	56mm	48mm	
180 cm-300 cm	56mm	48mm	7,55 kg (+-%3)
180 cm-300 cm	56mm	48mm	

**Elevating Safety, Strengthening Structures!**

## PRODUCTION AND LOADING VIEWS

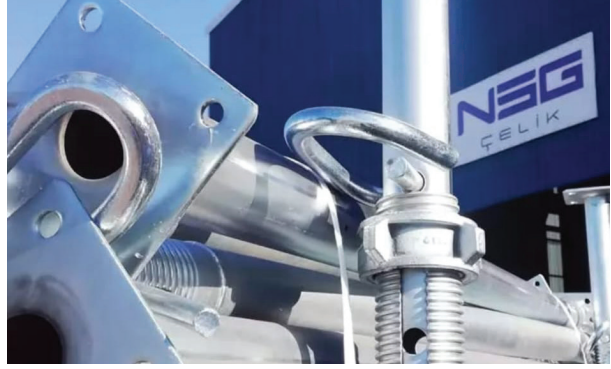


### Product Features

Min-max Usage Length	Outer Tube Diameter	Inner Tube Diameter	Prop Weight (kg)
330 cm-510 cm	56mm	48mm	13,10 kg (+-%3)
330 cm-510 cm	56mm	48mm	
230 cm-400 cm	56mm	48mm	10,40 kg (+-%3)
230 cm-400 cm	56mm	48mm	
210 cm-360 cm	56mm	48mm	9,60 kg (+-%3)
210 cm-360 cm	56mm	48mm	
190 cm-320 cm	56mm	48mm	8,80 kg (+-%3)
190 cm-320 cm	56mm	48mm	
180 cm-300 cm	56mm	48mm	8,40 kg (+-%3)
180 cm-300 cm	56mm	48mm	
180 cm-300 cm	56mm	48mm	7,55 kg (+-%3)
180 cm-300 cm	56mm	48mm	

**Elevating Safety, Strengthening Structures!**

## GERMAN TYPE ELECTRO GALVANISED PROP

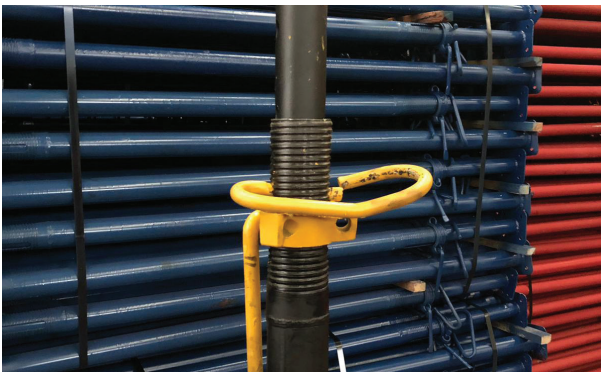


### Product Features

Min-max Usage Length	Outer Tube Diameter	Inner Tube Diameter	Prop Weight (kg)
330 cm-510 cm	60mm	48mm	13,20 kg (+-%3)
330 cm-510 cm	60mm	48 mm	
230 cm -400 cm	60mm	48 mm	10,50 kg (+-%3)
230 cm -400 cm	60mm	48 mm	
200 cm -350 cm	60mm	48 mm	9,70 kg (+-%3)
200 cm -350 cm	60mm	48 mm	
190 cm -320 cm	60mm	48 mm	8,90 kg (+-%3)
190 cm -320 cm	60mm	48 mm	
180 cm -300 cm	60mm	48 mm	8,50 kg (+-%3)
180 cm -300 cm	60mm	48 mm	

**Elevating Safety, Strengthening Structures!**

## GERMAN TYPE PAINTED PROPS



### Product Features

Min-max Usage Length	Outer Tube Diameter	Inner Tube Diameter	Prop Weight (kg)
330 cm-510 cm	60mm	48mm	13,20 kg (+-%3)
330 cm-510 cm	60mm	48 mm	
230 cm -400 cm	60mm	48 mm	10,50 kg (+-%3)
230 cm -400 cm	60mm	48 mm	
200 cm -350 cm	60mm	48 mm	9,70 kg (+-%3)
200 cm -350 cm	60mm	48 mm	
190 cm -320 cm	60mm	48 mm	8,90 kg (+-%3)
190 cm -320 cm	60mm	48 mm	
180 cm -300 cm	60mm	48 mm	8,50 kg (+-%3)
180 cm -300 cm	60mm	48 mm	

**Elevating Safety, Strengthening Structures!**



## ELECTRO POWDER COATED VE PAINTED



### Product Features

Min-max Usage Length	Outer Tube Diameter	Inner Tube Diameter	Prop Weight (kg)
330 cm-510 cm	60mm	48mm	13,20 kg (+-%3)
330 cm-510 cm	60mm	48 mm	
230 cm -400 cm	60mm	48 mm	10,50 kg (+-%3)
230 cm -400 cm	60mm	48 mm	
200 cm -350 cm	60mm	48 mm	9,70 kg (+-%3)
200 cm -350 cm	60mm	48 mm	
190 cm -320 cm	60mm	48 mm	8,90 kg (+-%3)
190 cm -320 cm	60mm	48 mm	
180 cm -300 cm	60mm	48 mm	8,50 kg (+-%3)
180 cm -300 cm	60mm	48 mm	

**Elevating Safety, Strengthening Structures!**

# NSG İSKELE



T.C.  
İSTANBUL TEKNİK ÜNİVERSİTESİ  
REKTÖRLÜĞÜ  
EARTHQUAKE ENGINEERING AND  
DISASTER MANAGEMENT INSTITUTE



NSG İSKELE ve YAPI ELEMANLARI SAN. TİC. LTD. ŞTİ.  
TELESCOPIC PROPS LOADING CAPACITY TEST  
TECHNICAL REPORT (745-2022)

This Report was Prepared According to ITU Circulating Capital Enterprise Rules

Prepared by:

Doç. Dr. Hasan YILDIRIM  
ITU Civil Engineering Faculty  
Material Science Division

ITU CIVIL ENGINEERING FACULTY  
DECEMBER 2022

mail : hasanyildirim@itu.edu.tr - yildirimhasan63@hotmail.com

İ.T.Ü.  
AFET YÖNETİMİ ENS. MD.  
Tarih 16.12.2022  
Kayıt No: 345

1



İSTANBUL TEKNİK ÜNİVERSİTESİ – İNŞAAT FAKÜLTESİ  
YAPI MALZEMELERİ LABORATUVARI  
34469 MASLAK / İSTANBUL TEL: (0212) 285 3757-58 FAX: (0212) 285 6587

Telescopic Props Loading Test  
Report No/Date: 544 / 13.12.2022  
Application No : DE745

NSG İSKELE ve YAPI ELEMANLARI SAN. TİC. LTD. ŞTİ.

According to your application to ITU Civil Engineering Faculty, Construction Building Materials Laboratory, loading capacity tests were carried out under the effect of compression load on Steel Telescopic Props produced by NSG. Loads were applied on 2 different lengths (minimum and maximum usage heights) of each telescopic strut type, in a parallel direction to the pipe axis. The test results are given in the table.

Min-max Usage Length	Outer Tube Diameter	Inner Tube Diameter	Prop Weight (kg)	Test Length (cm)	Maximum Load (kN)
330cm-510cm	56mm	48mm	13,10 kg (+-%3)	500	7,9
230cm-400cm	56mm	48mm	10,40 kg (+-%3)	330	15,5
210cm-360cm	56mm	48mm	9,60 kg (+-%3)	230	15,9
190cm-320cm	56mm	48mm	8,80 kg (+-%3)	360	8,7
180cm-300cm	56mm	48mm	8,40 kg (+-%3)	210	15,9
180cm-300cm	56mm	48mm	8,40 kg (+-%3)	320	10,6
180cm-300cm	56mm	48mm	8,40 kg (+-%3)	190	16,10
180cm-300cm	56mm	48mm	8,40 kg (+-%3)	300	13,7
180cm-300cm	56mm	48mm	7,55 kg (+-%3)	180	16,10
180cm-300cm	56mm	48mm	7,55 kg (+-%3)	300	12,7
				180	13,8

Notes : 1-Sample usage sizes are given by firm and 1 kN = 102 kgf.  
2-Security Factor Applied as 10%

Tech. Hamdi ATEŞ

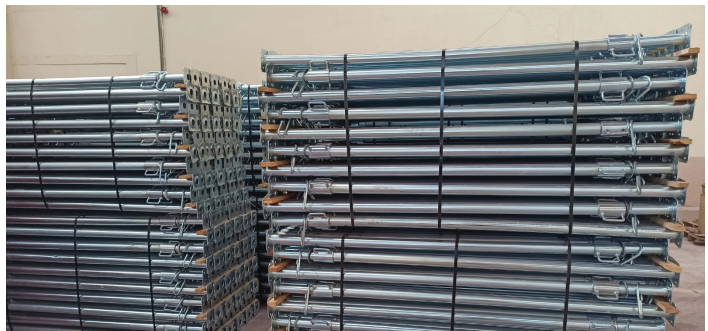
Tech. Murat MEYDAN

Laboratory Manager  
Assoc. Prof. Dr. Hasan YILDIRIM




2

EARTHQUAKE ENGINEERING AND  
DISASTER MANAGEMENT INSTITUTE





# NSG İSKELE

 Yeşilköy Mah. E-5 Karayolu Cad.  
No:110 Dört Yol/HATAY

 +90 (533) 031 64 35

 [info@nsgprops.com](mailto:info@nsgprops.com)

 [www.nsgprops.com](http://www.nsgprops.com)